

RACK OF SILENCE ASSEMBLY INSTRUCTIONS

We wish to thank you for purchasing this unique and performance enhancing audio rack.

Please follow these simple assembly instructions and you will soon sit back and enjoy your improved audio system.

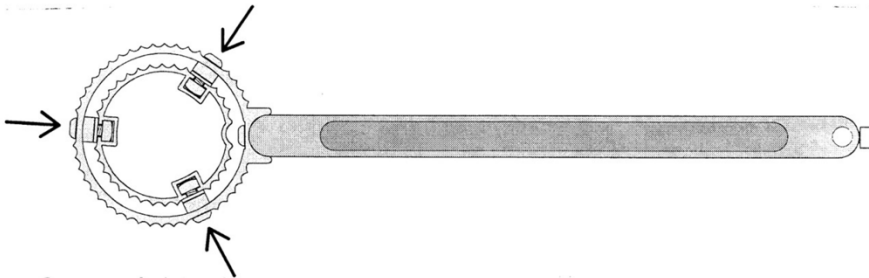
If you have purchased a rack-system with suspended shelf (s), please also follow assembly instructions for suspended shelf assemblies.

Maximum recommended shelf and strut loads:

- Basic shelf, max load 40kg (88lbs) or 10kg/strut (22lbs).
- Heavy-duty shelf, max load 80kg (176lbs) or 20kg/strut (44lbs).

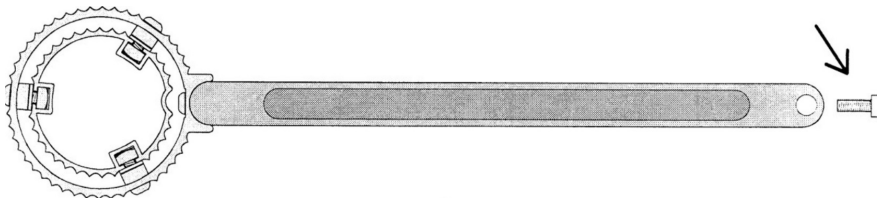
1. CONTROL OF CORNER PILLARS BEFORE ASSEMBLY

Important! Make sure that the below marked screws on each shelf assembly have not loosened during transportation.



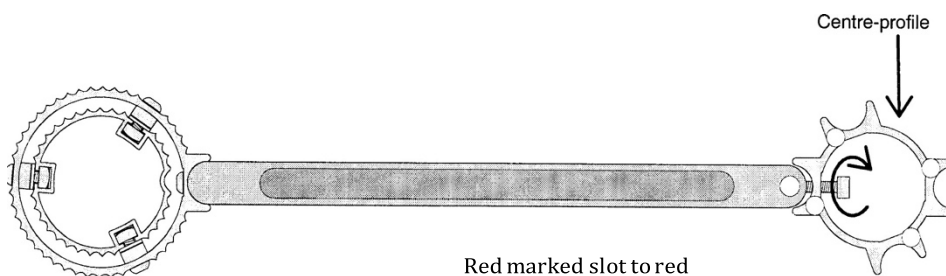
2. ASSEMBLY PREPARATION

Unscrew the below marked screw(s) at the end of each strut



3. ASSEMBLY OF CENTRE-PROFILES

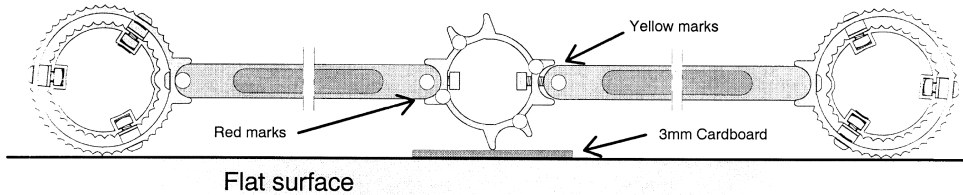
According to picture, position the red marked slots of all centre-profiles to the red marked struts. Do not tighten fully at this stage.



4. MOUNTING OF SECOND CORNER-PILLAR ASSEMBLY TO CENTRE PROFILES

Position the yellow marked struts in the yellow marked slots of each centre profile. In order to achieve a straight line of the struts place for an example a piece of 3mm thick cardboard under each centre-profile according to the figure. Screw the struts and centre-profiles together and tighten firmly.

Don't be afraid, the wood struts will not break.



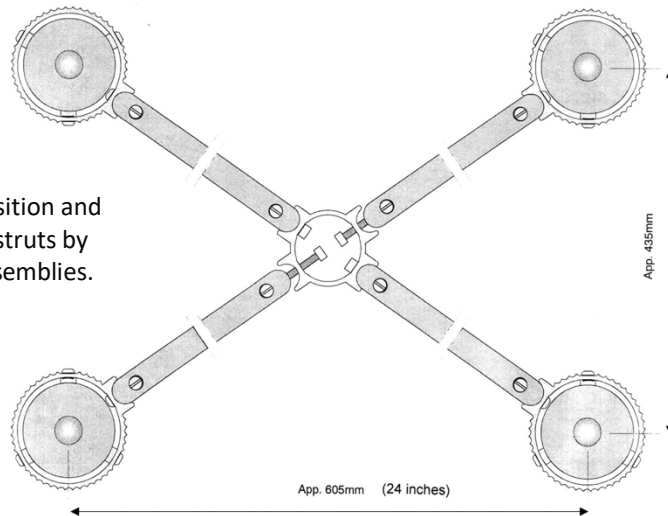
5. MOUNTING OF THE CORNER PILLARS

Position two assembled corner-pillars vertically on the FLOOR, with the spike fixture facing downwards.

6. FINAL MOUNTING OF CORNER-PILLAR ASSEMBLIES TO THE CENTRE- PROFILES AND RACK ALIGNMENTS

Assemble the two remaining corner-pillar assemblies to the centre profiles according to the colour markings.

Position the rack in its intended position and adjust the lateral alignment of the struts by slightly moving the corner-pillar assemblies.



7. APPLYING THE APPARATUS SUPPORT

Position the apparatus support above the struts in the position to best support the equipment.

8. ADDITIONAL DAMPING (ONLY FOR WOOD-CONE EQUIPPED LEGS, NOT FOR DISCS OF SILENCE EQUIPPED LEGS)

To achieve improved performance from the rack, we recommended filling the tubular legs with fine sand. This will act as an additional vibration-damping compound, which improves the performance even further. We recommend the use of sand with a very fine quality and grain size of 0,2-0,6mm. The sand intended for use, should be dry, clean and free of humidity.

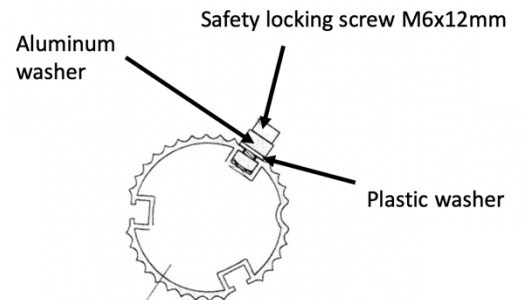
ASSEMBLY INSTRUCTION FOR SUSPENDED SHELF ASSEMBLIES

1. POSITIONING OF SAFETY LOCKING SCREWS

Each suspended shelf is supplied with four safety screws. The function of the safety screws is to prevent damage due to overloaded springs.

The springs can safely be extracted 11mm from its resting position.

The safety screw should thus be positioned 11mm below the shelf aluminum profile when unloaded. This is a safety precaution, which eliminates the possibility to accidentally overload the springs.



2. SUSPENDED PROFILE ASSEMBLIES

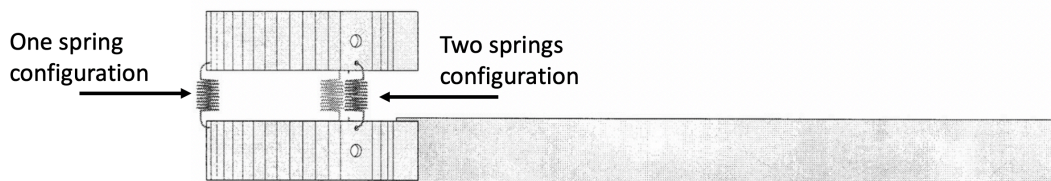
In order to achieve optimum isolation characteristics, each suspension corner should be adjusted to the actual corner weight. 1-3 springs can be used depending on the actual corner weight. The supplied springs can safely and effectively isolate weights between 1-10kg/corner (2,2-22lbs).

Important! Before any adjustments are made, make sure that the safety screw is positioned and tensioned correctly. Correct position is 11mm below shelf aluminum profile when unloaded.

If a corner weight of 1-3kg (2,2-6,6lbs) is to be suspended, a one-spring configuration should be used. We recommend using the spring opposite to the wood-strut.

If a corner weight of 3-6kg (6,6-13,2lbs) is to be suspended, a two springs configuration should be used. We recommend using the springs on each side of the wood strut.

If a corner weight of 6-10kg (13,2-22lbs) is to be suspended, all three springs should be used.



OPTIONAL ACCESSORIES

1. TOP TABLE LARGE

The Top Table Large table is available in high density MFD (black and white painted) or sandwich board, veneered in black oak, oak, walnut and cherry.

The sandwich board consists of 4 layers:

- Layer 1: thin sheet of cork on the top to avoid any potential ringing in the table
- Layer 2: MDF
- Layer 3: Porous damp layer that will absorb and remove resonance in the table
- Layer 4: MDF

The table has a thickness of 24mm width of 527mm and a length of 705mm.

The table has been tested by letting a 9,8g steel ball be dropped 50 cm above the sandwich board and compared with a standard MDF board. The result is described in below table:

Test object	Peak value (dB)	Peak average over 3 seconds (dB)
Sandwich board	109,7 dB	73,9 dB
Standard MDF board	119,9 dB	87,1 dB

From the result one can read that the sandwich board basically damp with 10-13dB compared to a standard MDF board.

The sandwich board has a limitation of load as it is placed on top of the corner pillars of the Rack of Silence. The maximum load is 50kg. If further load is required it is recommended to place the uppermost rack shelf just beneath it and use the apparatus support to assist the support of the table. In this way the maximum load can be increased to 160kg.

2. TOP TABLE SMALL

The small tables are made of high density MDF and available in black, white walnut, cherry, oak and black oak. To be mounted on top of the Apparatus Support.

3. DISCS OF SILENCE ON TOP OF CORNER PILLARS

Discs of Silence can be mounted on top of the Rack of Silence corner pillars in order to isolated the top table.

4. ISOLATOR SUPPORT

Accessory to be used together with Solid Tech stand-alone isolators, IsoBlack, Discs of Silence and Feet of Silence.

The Isolator Support replaces the Apparatus Support that is included with the rack.

Mainly to be used on either with Rack of Silence Regular racks or Rack of Silence Reference shelves that do not have integrated suspension system.

5. FEET

Three different feet are available to be position beneath the rack, either for the spike to rest on (Floor Protector or Feet of Concrete) or replacing the spike (Spike Fixed Floor Protector).

6. SPARE PARTS

All parts of Rack of Silence are available as spare parts.